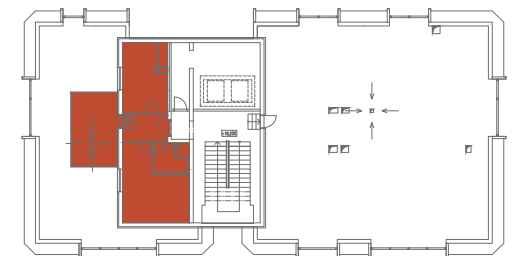
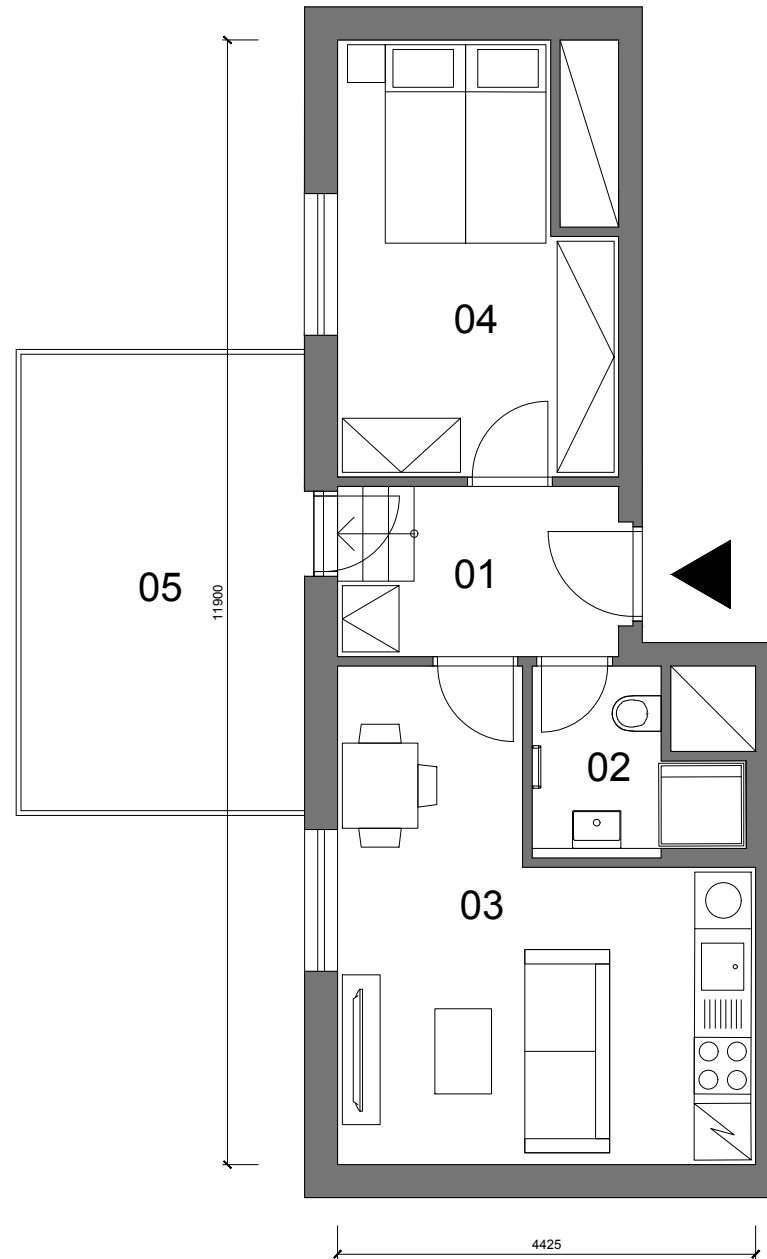


UBYTOVACÍ JEDNOTKA B.601

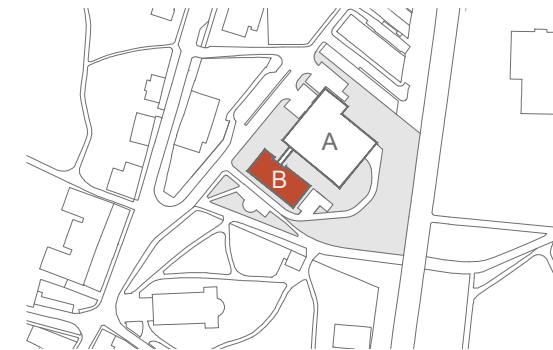
6.NP 2+KK 43,2m<sup>2</sup> (PP)

01	Chodba	5.5m <sup>2</sup>
02	Koupelna	3.6m <sup>2</sup>
03	Obývací pokoj	18.1m <sup>2</sup>
04	Ložnice	12.3m <sup>2</sup>
UŽITNÁ PLOCHA		39.5m <sup>2</sup>
PODLAHOVÁ PLOCHA		43.2m <sup>2</sup>
05	Terasa /není započteno do užité plochy/	15.0m <sup>2</sup>

PP - Podlahová plocha



6.NP



SITUACE