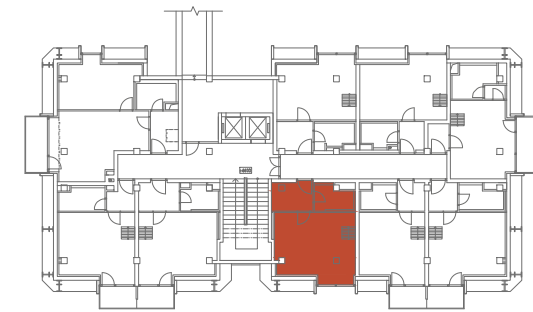
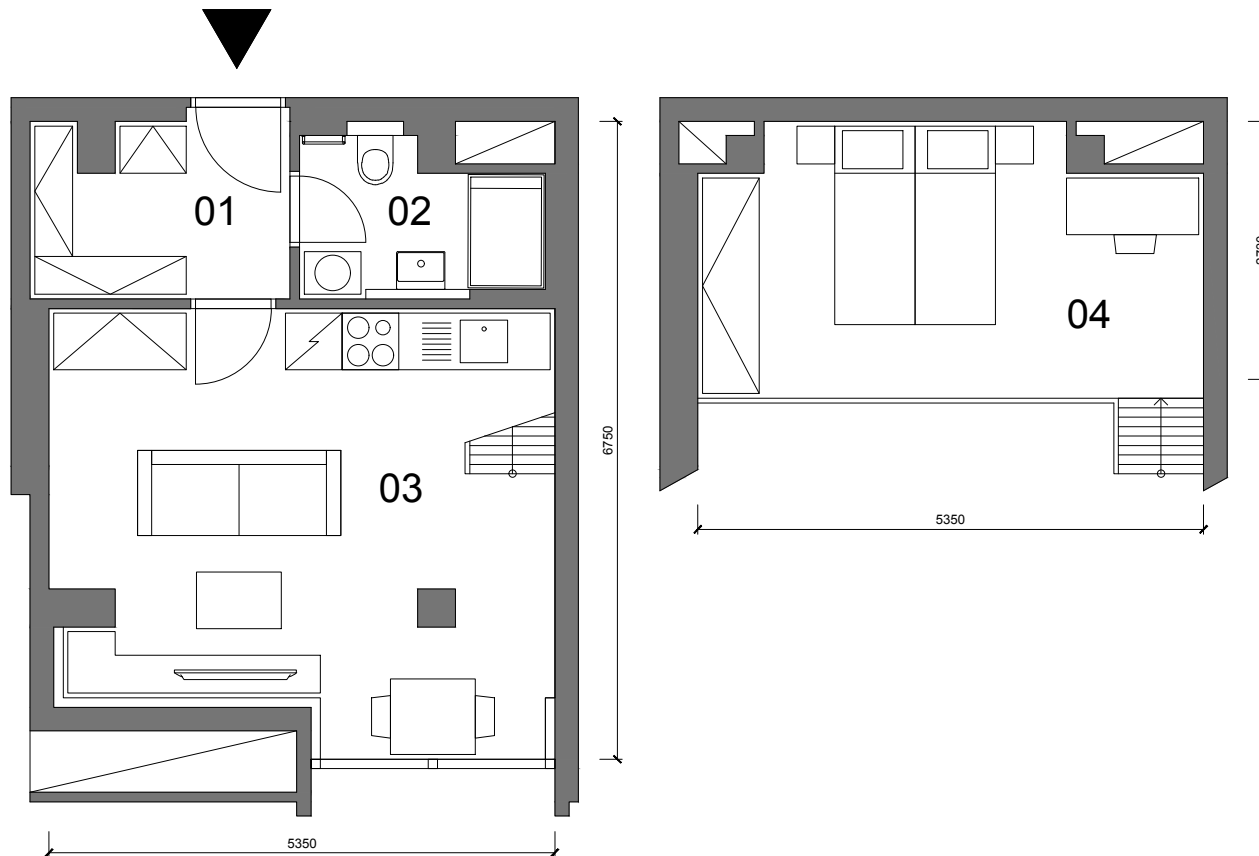


UBYTOVACÍ JEDNOTKA B.404

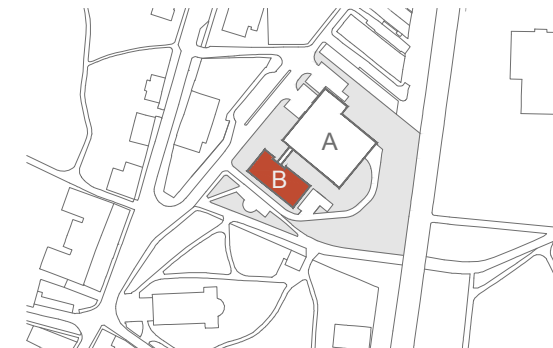
4.NP 1+KK 34,7m<sup>2</sup> (PP)

|                         |  |                          |
|-------------------------|--|--------------------------|
| 01                      | Chodba                                       | 5.3m <sup>2</sup>        |
| 02                      | Koupelna                                     | 4.0m <sup>2</sup>        |
| 03                      | Obývací pokoj                                | 23.5m <sup>2</sup>       |
| <b>UŽITNÁ PLOCHA</b>    |  | <b>32.8m<sup>2</sup></b> |
| <b>PODLAHOVÁ PLOCHA</b> |  | <b>34.7m<sup>2</sup></b> |
| 04                      | Spací patro /není započteno do užité plochy/ | 13.4m <sup>2</sup>       |

PP - Podlahová plocha



4.NP



SITUACE

